

**應用 APPLICATIONS**

礦業與礦物加工業、化工廠、石油與天然氣工業、高壓流體、蒸氣及高溫流體、壓縮天然氣與液化天然氣、一般流體。  
Mining & Mineral Processing, Chemical Plant, Oil & Gas, High Pressure Fluid, Steam & High Temperature Fluid, CNG & LNG, General Fluid

**技術資料 TECHNICAL DATA**

設計 Design	ASME B16.34
尺寸 Size	1/4" ~ 2"
壓力等級 Pressure Rating	Class 800, Class 1500, Class 2500
端口 End Connections	牙口端、套焊端、加長短管可根據要求提供 Threaded End, Socket Weld, Pup extension is available on request
產品檢測 Testing	API 598
流量 Bore	全流量、減流量 Full Bore, Reduced Bore
認證 Certificate	API 607

**特點 FEATURES**

- 以具有競爭力的價格提供卓越的閥門設計。
- 可安裝驅動器 (310)。
- RPTFE密封消除了對產品污染的擔憂。
- 防火認證 API 607。可應要求提供。
- 明確的開關位置指示。
- 防爆軸心。
- NACE MR0175 可應要求提供。
- 可使用附鎖裝置。
- 防靜電裝置。
- 根據 ISO 9001 認證的質量體系製造。
- 多種球座材質可供選擇。

除了標準的球座材質，球座有以下材質可供選擇。每個球座選項將滿足廣泛的性能，適用於許多應用：

- PTFE + 15% Glass Fiber
- PTFE + 25% Carbon Fiber
- Modified PTFE
- Modified PTFE + 25% Carbon Fiber
- PTFE + 50% SS
- PEEK
- Delrin
- Nylon + Mos2

\* 請參考溫壓圖

- Superior valve design at a competitive price.
- Available for mount actuator. (310)
- RPTFE seal relieves concern over product contamination.
- Fire test certified to API 607. Available on request.
- Positive position indication.
- Blowout-proof shaft.
- NACE MR0175 available on request.
- Locking device is available.
- Anti-static device.
- Manufactured under ISO 9001 certified quality system.
- Various seat material are available.

In addition to standard seat material, following variety is available. Each material option will meet a wide range of performance, suitable for many applications.

- PTFE + 15% Glass Fiber
- PTFE + 25% Carbon Fiber
- Modified PTFE
- Modified PTFE + 25% Carbon Fiber
- PTFE + 50% SS
- PEEK
- Delrin
- Nylon + Mos2

\* Please refer to the Pressure-Temperature rating

**310剖面圖**

雙D設計  
平面平行於流向，標示球的位置  
Double D design  
Flats parallel to flow indicates ball position

防火石墨中口  
Graphite fire safe stem packing

小薄片  
Thrust washer

防爆軸心  
Blow out proof stem

防靜電裝置  
Anti-static device

第二道金屬球座襯環  
Secondary metallic seating ring

本體O型環能完美密封  
Body O-ring for perfect sealing

凸緣溝槽閥體密封設計  
Tongue & groove body seal design

減流球  
Reduced port ball

ISO 5211 平台  
ISO 5211 mounting pad

附鎖裝置  
Locking device

自動調節彈簧設計  
Live loading disc spring

有中軸O型環具備良好的密封功能  
With stem O-ring providing good sealing function

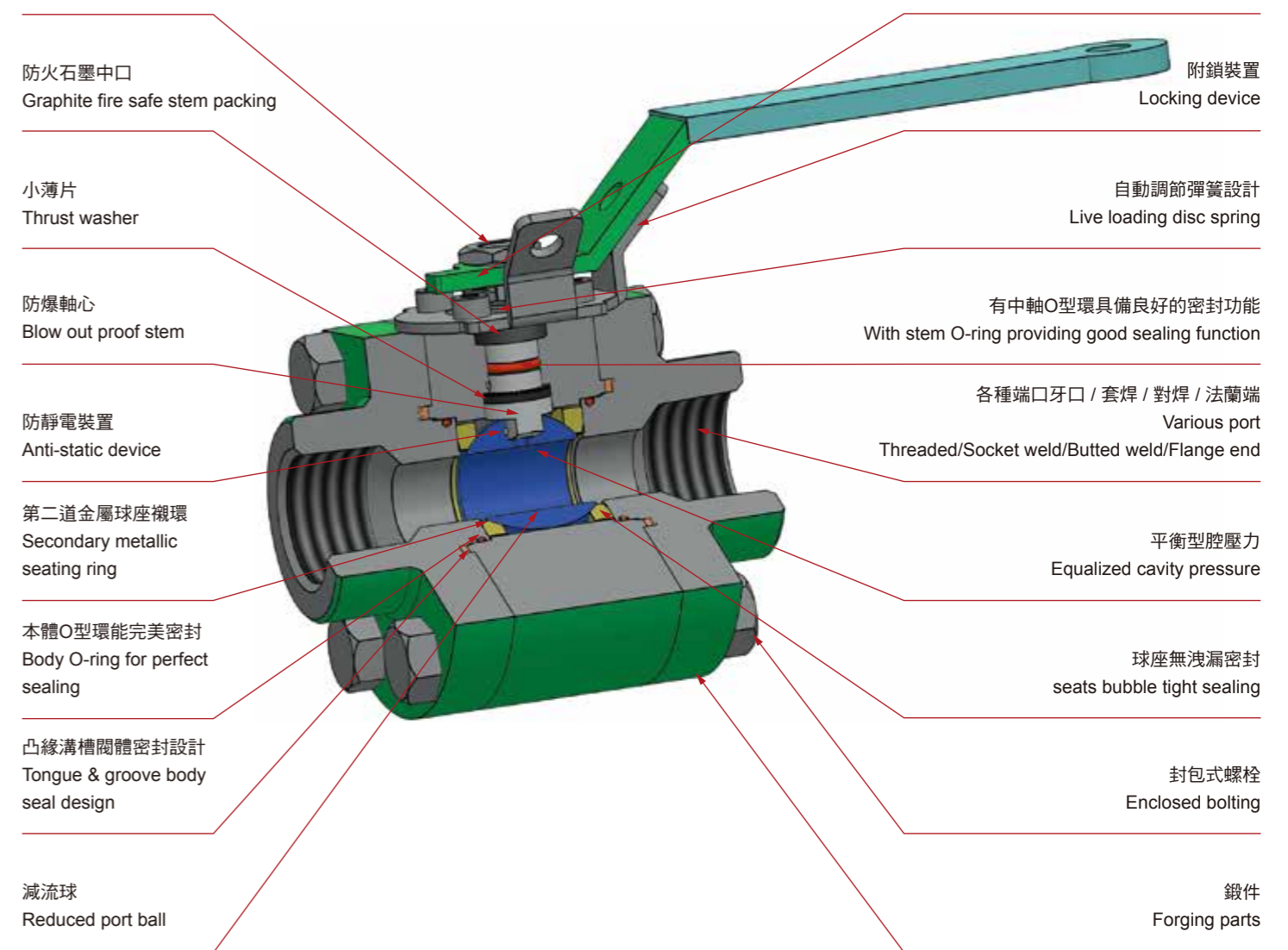
各種端口牙口 / 套焊 / 對焊 / 法蘭端  
Various port Threaded/socket weld/butted weld/flange end

平衡型腔壓力  
Equalized cavity pressure

球座無洩漏密封  
seats bubble tight sealing

封包式螺栓  
Enclosed bolting

鍛件  
Forging parts



**P系列 P Series 剖面圖**

**把手**  
以堅固耐用的鑄件生產，並且有附鎖裝置  
Handle  
Heavy duty cast and locking device as standard

**本體**  
以堅固耐用的鍛造/鑄造件生產，三片式螺紋設計，可有不同的端口型式，全流、加長套焊端。100%殼體水壓測試，工作壓力為1.5倍  
Body  
Heavy duty solid forged/cast three piece threaded design allows for different end connections, full port and extended socket weld ends. 100% shell hydro tested to 1.5 times working pressure.

**球座跟密封件**  
符合您需求的球座及密封件。有O型環支援的密封功能，使得球閥在高壓時操作仍維持低扭力  
Seats and seals  
Seats and seals to your specifications. O-ring back-up seal provides low torque for higher pressure valves during operation.

**球**  
精密的不鏽鋼浮動球，提供優良的關斷功能。所有的球都設計有壓力平衡孔  
Ball  
Precision stainless steel floating ball provides positive shut off. All balls designed with pressure equalizing hole. 17-4PH balls for high pressure service.



**軸心**  
防爆軸心 (17-4PH材質中軸用在高壓環境)  
Stem  
Blow out proof stem design. 17-4PH stem for high pressure service.

NACE MR 0175 & 103作為標準設計  
NACE MR 0175 & 103 as standard design.

**中口**  
三重中軸密封配有小薄片、O-ring跟中口  
Stem seals  
Triple stem seals completed with thrust washer, O-ring and packing.

**點焊**  
Tack weld

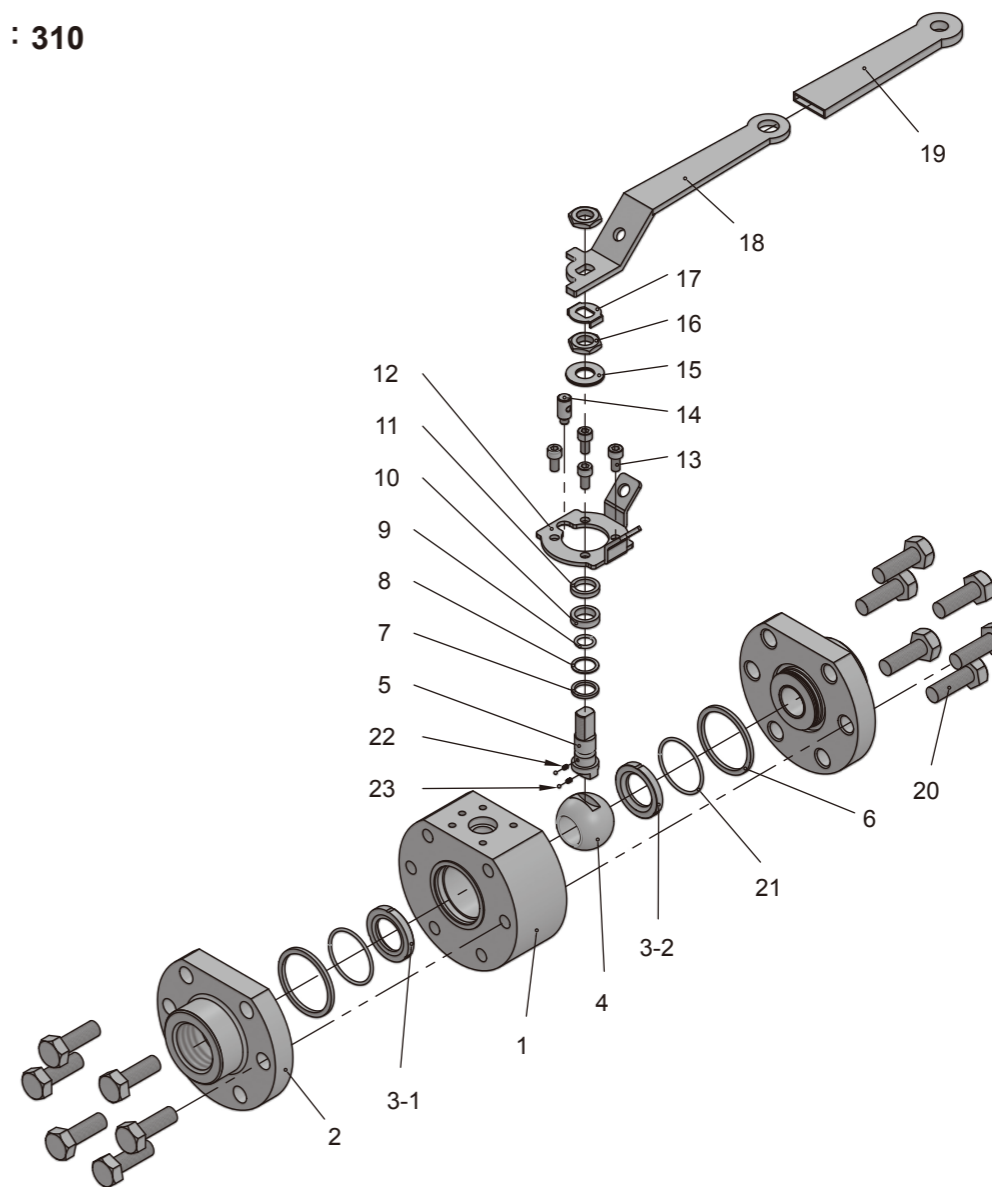
**防靜電**  
Anti-static

**防火石墨墊片**  
Fire safe graphite gasket

**本體 O-ring**  
符合您需求的O-ring提供優良的密封功能，並防止流體接觸連接端口及外部洩漏  
Body O-ring  
O-ring seal to your choice provides positive seal and prevents fluid getting contact with connection threads and external leak.

**物料表 MATERIAL COMPOSITION**

**型號 Fig. No. : 310**



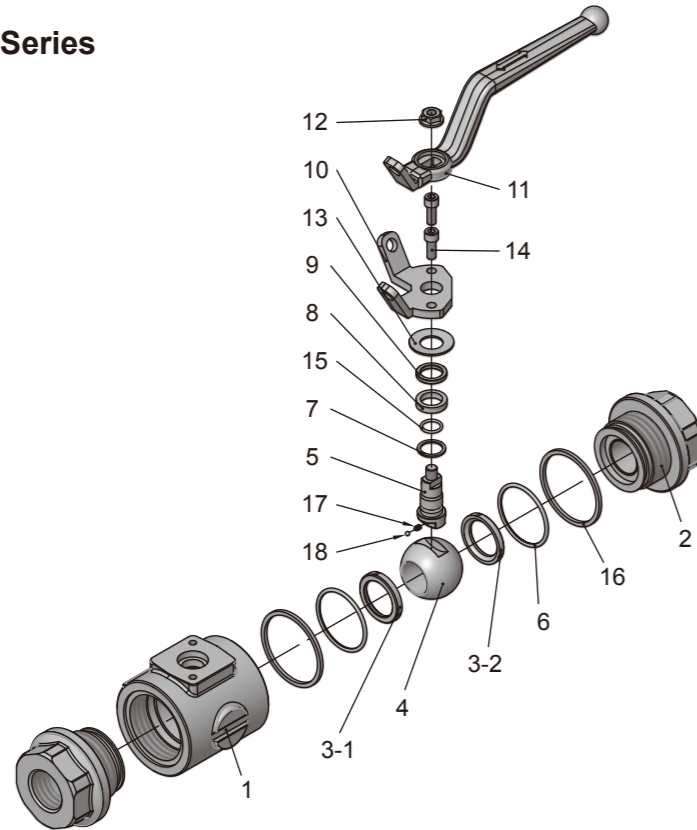
ITEM	PART NAME	EA-310A	EA-310C	ITEM	PART NAME	EA-310A	EA-310C
1	Body	F316	A105N	13	Screw	SS 304	SS 304
2	End Caps	F316	A105N	14	Stop Screw	SS 304	SS 304
3	Seats	PEEK	PEEK	15	Belleville Spring Washer	SS 301	SS 301
4	Ball	17-4PH	17-4PH	16	Lever Nut	SS 304	SS 304
5	Stem	17-4PH	17-4PH	17	Locking Tab	SS 304	SS 304
6	Body Seal	GRAPHITE	GRAPHITE	18	Handle	SS 304	SS 304
7	Thrust Washer	PTFE	PTFE	19	Handle Cover	PVC	PVC
8	Thrust Washer	GRAPHITE	GRAPHITE	20	Bolts	A193-B8M CLS2	A193-B7M
9	Stem O-ring	VITON	VITON	21	Body O-ring	VITON	VITON
10	Packing	GRAPHITE	GRAPHITE	22	Spring	SS 316	SS 316
11	Gland Ring	SS 304	SS 304	23	Anti-Static	SS 316	SS 316
12	Locking Plate	SS 304	SS 304				

\* 我方有權隨時變更材質/設計/規格，以便提供品質優良的產品。

We reserve the right to modify the design / specification without previous notice for better quality.

物料表 MATERIAL COMPOSITION

型號 Fig. No. : P系列 P Series



ITEM	PART NAME	Pressure	P134/135	P334/335	P334/335
1	Body	ALL	A105	LF2	F316
2	End Caps	ALL	A105	LF2	F316
3	Seats	2000	TFM4215	TFM4215	TFM4215
		3000	Delrin	Delrin	Delrin
		4000	Nylon+Mos2	Nylon+Mos2	Nylon+Mos2
4	Ball	6000	PEEK	PEEK	PEEK
		2000	CF8M	CF8M	CF8M
		3000&4000	CF8M	CF8M	CF8M
5	Stem	ALL	17-4PH	17-4PH	17-4PH
6	Body O-ring	ALL	HNBR	HNBR	HNBR
7	Thrust Washer	2000	PTFE+15%G.F.	PTFE+15%G.F.	PTFE+15%G.F.
		3000&4000	Nylon+MoS2	Nylon+MoS2	Nylon+MoS2
8	Packing	6000	PEEK	PEEK	PEEK
		ALL	PTFE+15%G.F.	PTFE+15%G.F.	PTFE+15%G.F.
9	Packing Follower	ALL	Graphite	Graphite	Graphite
10	Gland Flange	ALL	SS 304	SS 304	SS 304
11	Handle	ALL	CS,Plated	CS,Plated	CS,Plated
12	Self Locking Nut	ALL	CS,Plated	CS,Plated	CS,Plated
13	Belleville Washer	ALL	CS,Plated	CS,Plated	CS,Plated
14	Stop Screw	ALL	Stainless Steel	Stainless Steel	Stainless Steel
15	Stem O-ring	ALL	Stainless Steel	Stainless Steel	Stainless Steel
16	Body Gasket	ALL	HNBR	HNBR	HNBR
17	Spring	ALL	Graphite	Graphite	Graphite
18	Static Device	ALL	Graphite	Graphite	Graphite

\*CF8M Max. Pressure 3000psi

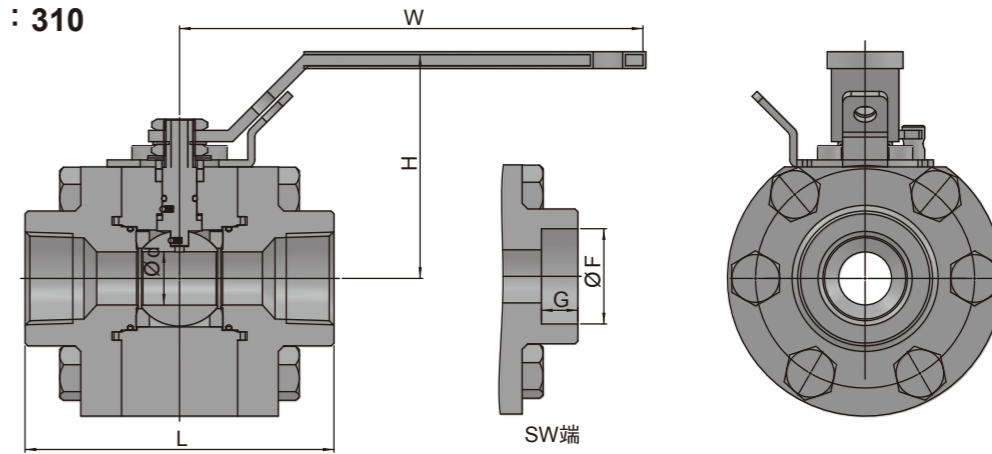
\*Item 8 & 16: Fire Safe Design

\* 我方有權隨時變更材質/設計/規格，以便提供品質優良的產品。

We reserve the right to modify the design / specification without previous notice for better quality.

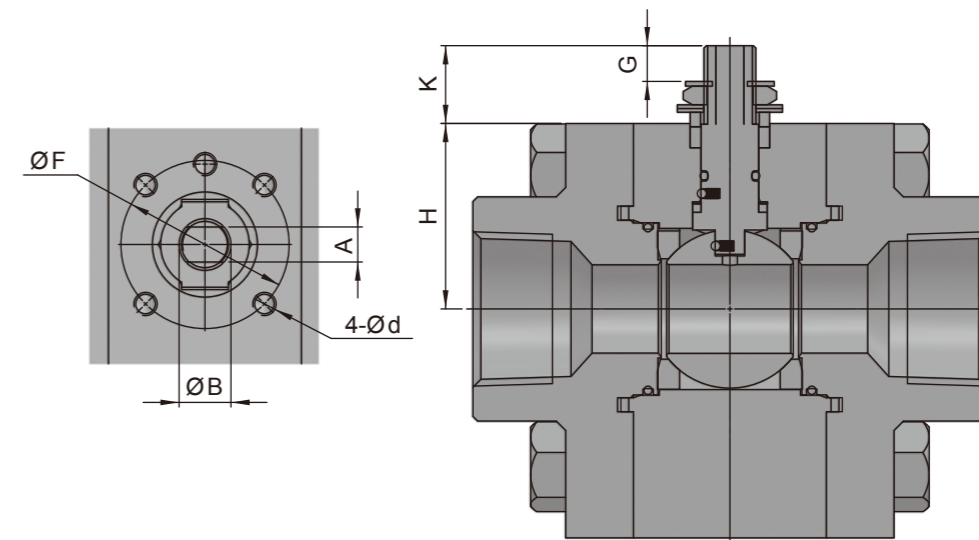
尺寸圖 DIMENSION LIST

型號 Fig. No. : 310



SIZE	d	L	W	H	F	G	ISO5211
1/2"	11.1	90	145	74.5	21.8	10	F03
3/4"	14.5	95	145	74.5	27.2	13	F03
1"	19	110	165	80.3	33.9	13	F03
1-1/4"	25	128	250	110.5	42.7	13	F05
1-1/2"	32	128	250	110.5	48.8	13	F05
2"	38	156	300	123.6	61.2	16	F05

平台架尺寸 DIMENSIONS OF ISO MOUNTING PAD

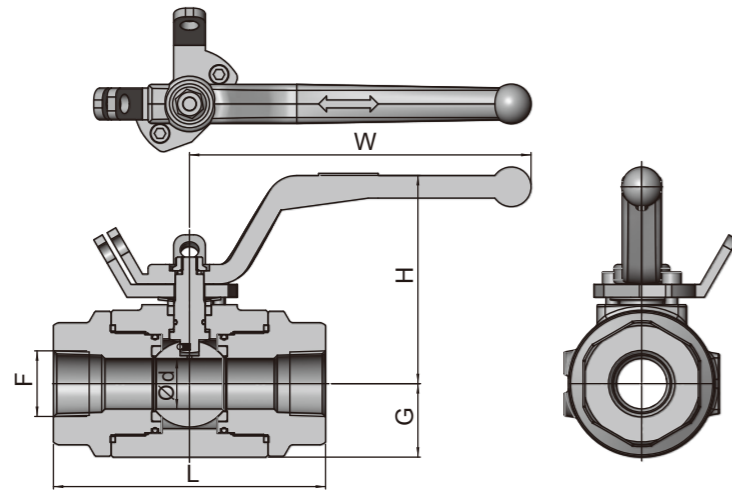


SIZE	A	B	d	F	G	K	H	ISO5211
1/2"	7.5	11.1	M5	36	7.5	16.5	31.6	F03
3/4"	7.5	11.1	M5	36	7.5	16.5	31.6	F03
1"	7.5	11.1	M5	36	7.7	16.7	39.7	F03
1-1/4"	9	14.3	M6	50	10.6	21.9	46.5	F05
1-1/2"	9	14.3	M6	50	10.6	21.9	51.5	F05
2"	11	18	M6	50	17.4	29.1	64.5	F05

\* 我方有權隨時變更材質/設計/規格，以便提供品質優良的產品。

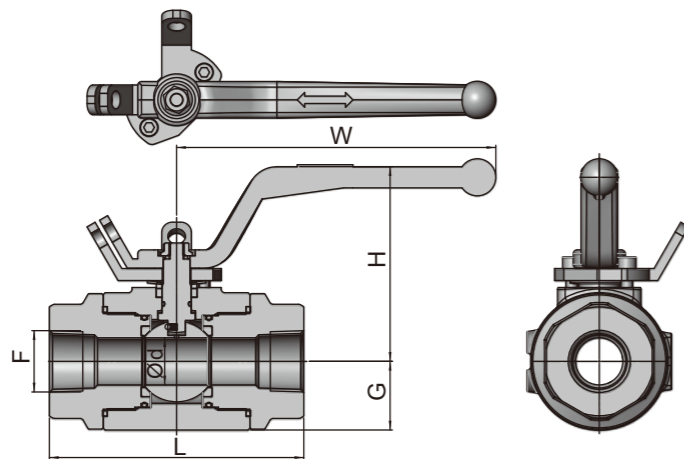
We reserve the right to modify the design / specification without previous notice for better quality.

尺寸圖 DIMENSION LIST



**P135/P235/P335 (SC\*SC, Full Port, 2000 to 6000 WOG)**

Item	Pressure (WOG)	d	L	H	W	G	E	J	F
DN15 1/2"	ALL	12.7	114	83.6	145	21.5	21.8	10	1/2"-NPT
DN20 3/4"	ALL	19	141	90.8	145	30.5	27.2	13	3/4"-NPT
DN25 1"	ALL	25.4	154	99.3	172	37	33.9	13	1"-NPT
DN32 1-1/4"	ALL	38.1	189	148.3	275	50.5	42.7	13	1-1/4"-NPT
DN40 1-1/2"	ALL	38.1	189	148.3	275	50.5	48.8	13	1-1/2"-NPT
DN50 2"	ALL	50.8	205	189	302	64	61.2	16	2"-NPT



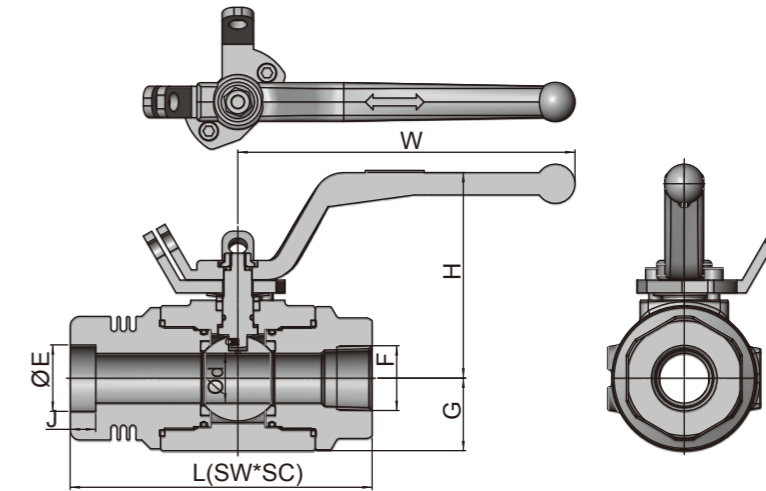
**P134/P234/P334 (SC\*SC, Reduced Port, 2000 to 6000 WOG)**

Item	Pressure (WOG)	d	L	H	W	G	F
DN20 3/4"	2000 3000 4000 6000	12.7	101 111	83.6	145	21.5	3/4"-NPT
DN25 1"	2000 3000 4000 6000	19	110 133	90.8	145	30.5	1"-NPT
DN32 1-1/4"	ALL	25.4	163	99.3	172	37	1-1/4"-NPT
DN40 1-1/2"	ALL	25.4	163	99.3	172	37	1-1/2"-NPT
DN50 2"	2000 3000 4000 6000	38.1	159 184	148.3	275	50.5	2"-NPT
DN80 3"	ALL	50.8	254	189	302	64	3"-NPT

\* 我方有權隨時變更材質/設計/規格，以便提供品質優良的產品。

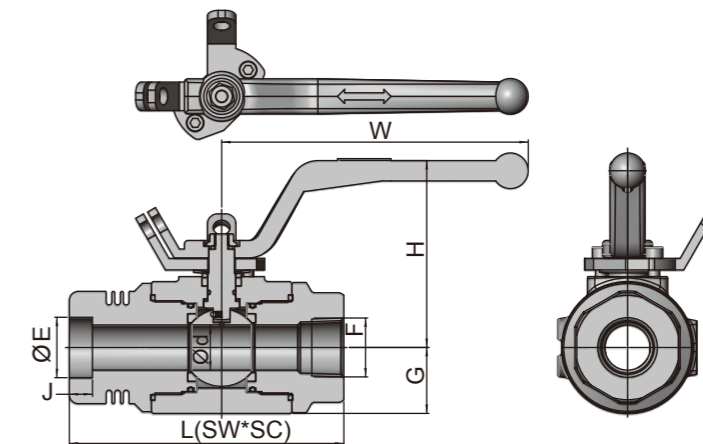
We reserve the right to modify the design / specification without previous notice for better quality.

尺寸圖 DIMENSION LIST



**P135/P235/P335 (SW\*SC, Full Port, 2000 to 6000 WOG)**

Item	Pressure (WOG)	d	L	H	W	G	E	J	F
DN15 1/2"	ALL	12.7	114	83.6	145	21.5	21.8	10	1/2"-NPT
DN20 3/4"	ALL	19	141	90.8	145	30.5	27.2	13	3/4"-NPT
DN25 1"	ALL	25.4	154	99.3	172	37	33.9	13	1"-NPT
DN32 1-1/4"	ALL	38.1	189	148.3	275	50.5	42.7	13	1-1/4"-NPT
DN40 1-1/2"	ALL	38.1	189	148.3	275	50.5	48.8	13	1-1/2"-NPT
DN50 2"	ALL	50.8	205	189	302	64	61.2	16	2"-NPT



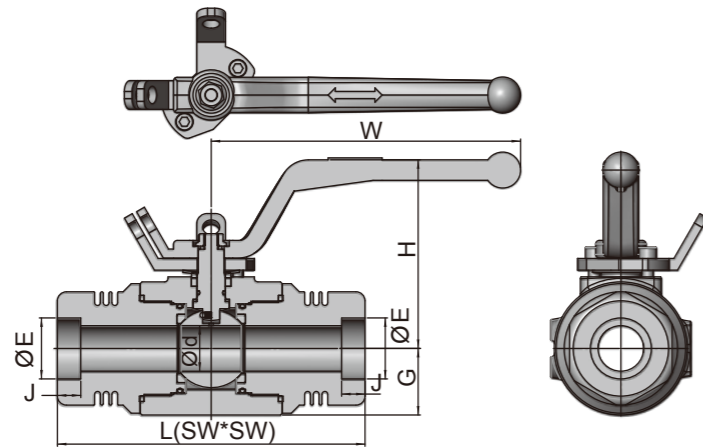
**P134/P234/P334 (SW\*SC, Reduced Port, 2000 to 6000 WOG)**

Item	Pressure (WOG)	d	L	H	W	G	E	J	F
DN20 3/4"	2000 3000 4000 6000	12.7	114 119	83.6	145	21.5	27.2	13	3/4"-NPT
DN25 1"	2000 3000 4000 6000	19	140.5 152	90.8	145	30.5	33.9	13	1"-NPT
DN32 1-1/4"	ALL	25.4	175	99.3	172	37	42.7	13	1-1/4"-NPT
DN40 1-1/2"	ALL	25.4	175	99.3	172	37	42.7	13	1-1/2"-NPT
DN50 2"	2000 3000 4000 6000	38.1	188 201.5	148.3	275	50.5	61.2	16	2"-NPT
DN80 3"	ALL	50.8	261	189	302	64	90	16	3"-NPT

\* 我方有權隨時變更材質/設計/規格，以便提供品質優良的產品。

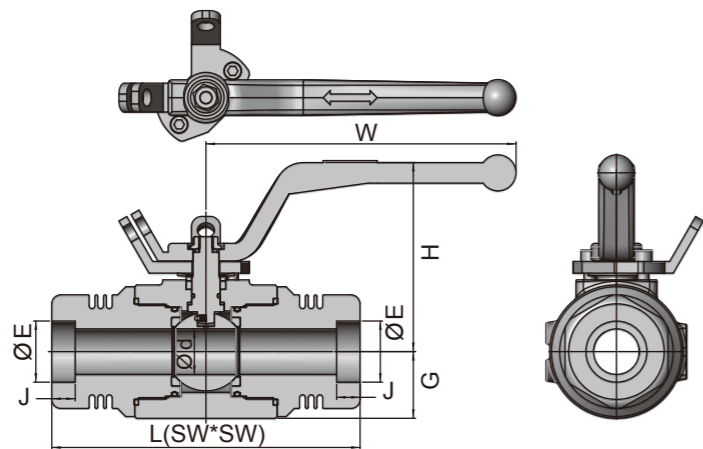
We reserve the right to modify the design / specification without previous notice for better quality.

尺寸圖 DIMENSION LIST



**P135/P235/P335 (SW\*SW, Full Port, 2000 to 6000 WOG)**

Item	NPS	Size	Pressure (WOG)	d	L	H	W	G	E	J
DN15	1/2"	1/2"	ALL	12.7	127	83.6	145	21.5	21.8	10
DN20	3/4"	3/4"	ALL	19	171	90.8	145	30.5	27.2	13
DN25	1"	1"	ALL	25.4	171	99.3	172	37	33.9	13
DN32	1-1/4"	1-1/4"	ALL	38.1	217	148.3	275	50.5	42.7	13
DN40	1-1/2"	1-1/2"	ALL	38.1	217	148.3	275	50.5	48.8	13
DN50	2"	2"	ALL	50.8	251	189	302	64	61.2	16



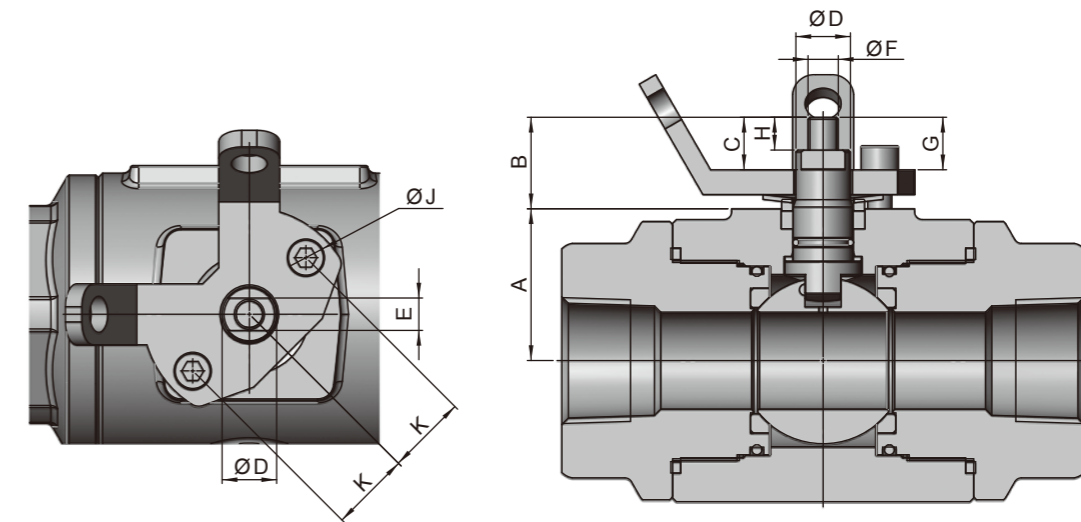
**P134/P234/P334 (SW\*SW, Reduced Port, 2000 to 6000 WOG)**

Item	NPS	Size	Pressure (WOG)	d	L	H	W	G	E	J
DN20	3/4"	3/4"	ALL	12.7	127	83.6	145	21.5	27.2	13
DN25	1"	1"	ALL	19	171	90.8	145	30.5	33.9	13
DN32	1-1/4"	1-1/4"	ALL	25.4	187	99.3	172	37	42.7	13
DN40	1-1/2"	1-1/2"	ALL	38.1	187	99.3	172	50.5	42.7	13
DN50	2"	2"	ALL	38.1	217	148.3	275	50.5	61.2	16
DN80	3"	3"	ALL	50.8	268	189	302	64	90	16

\* 我方有權隨時變更材質/設計/規格，以便提供品質優良的產品。

We reserve the right to modify the design / specification without previous notice for better quality.

平台架尺寸 DIMENSIONS OF ISO MOUNTING PAD



**P135/P235/P335**

Item	NPS	Size	A	B	C	D	E	F	G	H	J	K
DN15	1/2"	1/2"	26.8	18.6	11.4	11.4	6.8	1/4"-20UNC	11.4	7.5	7.8	18
DN20	3/4"	3/4"	32	20.6	11.4	11.4	6.8	1/4"-20UNC	12	7.5	7.8	18
DN25	1"	1"	39.8	24	13.5	14.3	8.5	5/16"-18UNC	14.1	8.6	9.8	21
DN32	1-1/4"	1-1/4"	39.8	34.7	21.4	19.1	11.4	7/16"-14UNC	22.9	12.4	11.7	26.6
DN40	1-1/2"	1-1/2"	58.7	34.7	21.4	19.1	11.4	7/16"-14UNC	22.9	12.4	11.7	26.6
DN50	2"	2"	76.2	46.3	30	25.4	16	5/8"-11UNC	31.1	17.5	14.1	31.8

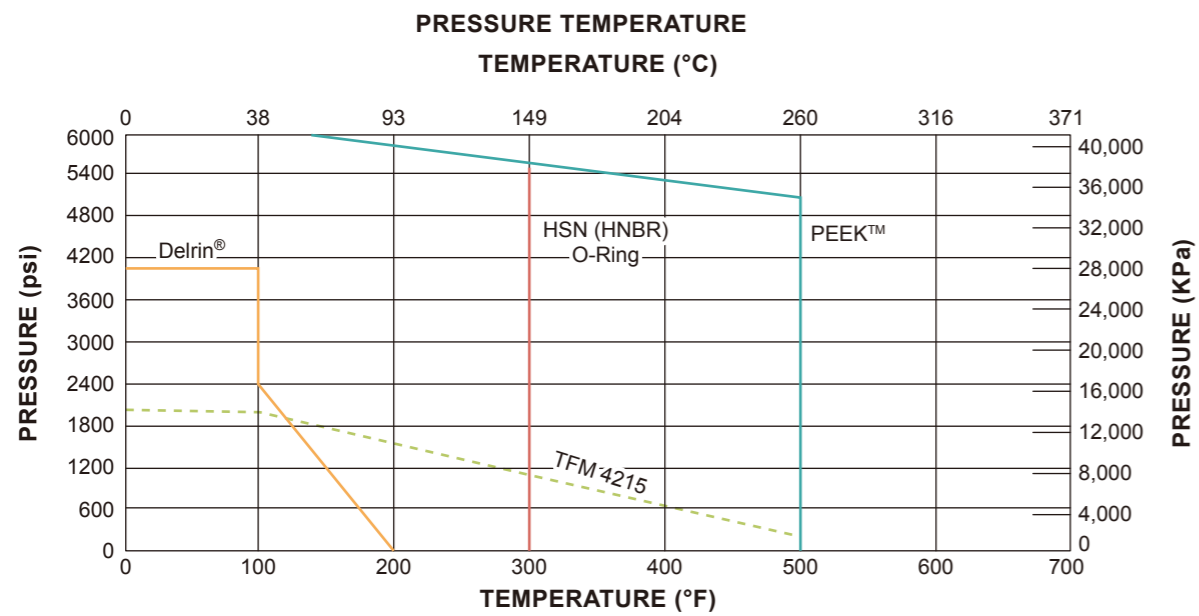
**P134/P234/P334**

Item	NPS	Size	A	B	C	D	E	F	G	H	J	K
DN20	3/4"	3/4"	26.8	18.6	11.4	11.4	6.8	1/4"-20UNC	11.4	7.5	7.8	18
DN25	1"	1"	32	20.6	11.4	11.4	6.8	1/4"-20UNC	12	7.5	7.8	18
DN32	1-1/4"	1-1/4"	39.8	24	13.5	14.3	8.5	5/16"-18UNC	14.1	8.6	9.8	21
DN40	1-1/2"	1-1/2"	39.8	24	13.5	14.3	8.5	5/16"-18UNC	14.1	8.6	9.8	21
DN50	2"	2"	58.7	34.7	21.4	19.1	11.4	7/16"-14UNC	22.9	12.4	11.7	26.6
DN80	3"	3"	76.2	46.3	30	25.4	16	5/8"-11UNC	31.1	17.5	14.1	31.8

\* 我方有權隨時變更材質/設計/規格，以便提供品質優良的產品。

We reserve the right to modify the design / specification without previous notice for better quality.

溫度壓力曲線圖 P/T CHART



Note: Consult ASME B16.34 for Body and Adapter Material Pressure/Temperature Ratings.