



球閥

BALL VALVE

SERIES

牙口體端焊接球閥

Tack Welded Body Threaded End Ball Valve

MODEL

23H / 23M

產品介紹

Product Introduction

應用 APPLICATIONS

礦業與礦物加工業、水與汙水處理、化工廠、石油與天然氣工業、高壓流體、蒸氣及高溫流體、壓縮天然氣與液化天然氣、一般流體。

Mining & Mineral Processing, Water & Waste Water, Chemical Plant, Oil & Gas, High Pressure Fluid, Steam & High Temperature Fluid, CNG & LNG, Automotive Industry, General Fluid.

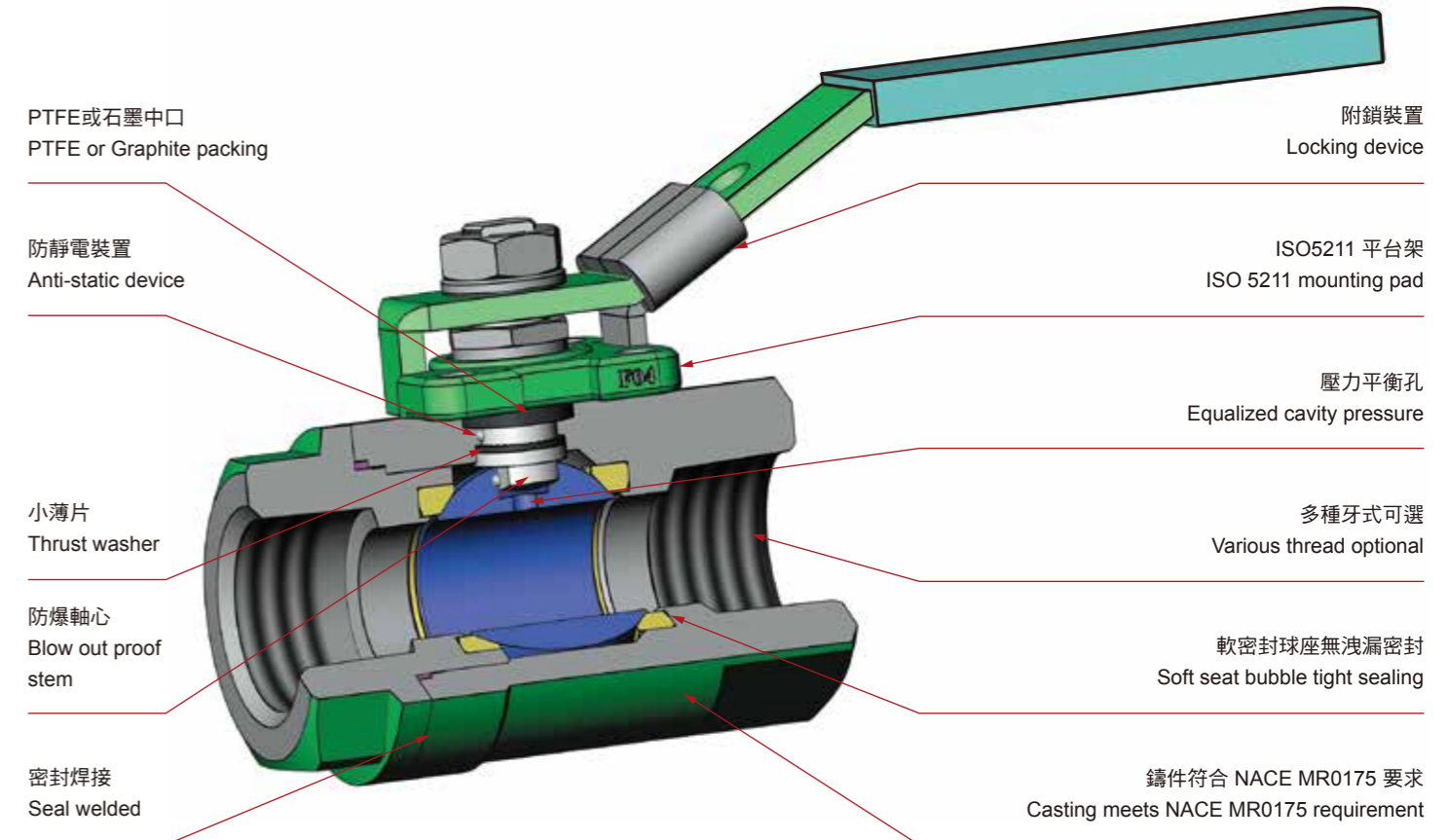
技術資料 TECHNICAL DATA

設計 Design	MSS-SP-110
尺寸 Size	1/4" ~ 2"
壓力等級 Pressure Rating	2000 WOG
端口 End Connections	牙口端 Threaded End
產品檢測 Testing	API 598
流量 Bore	標準流量 Standard Bore
認證 Certificate	API 607: 23H

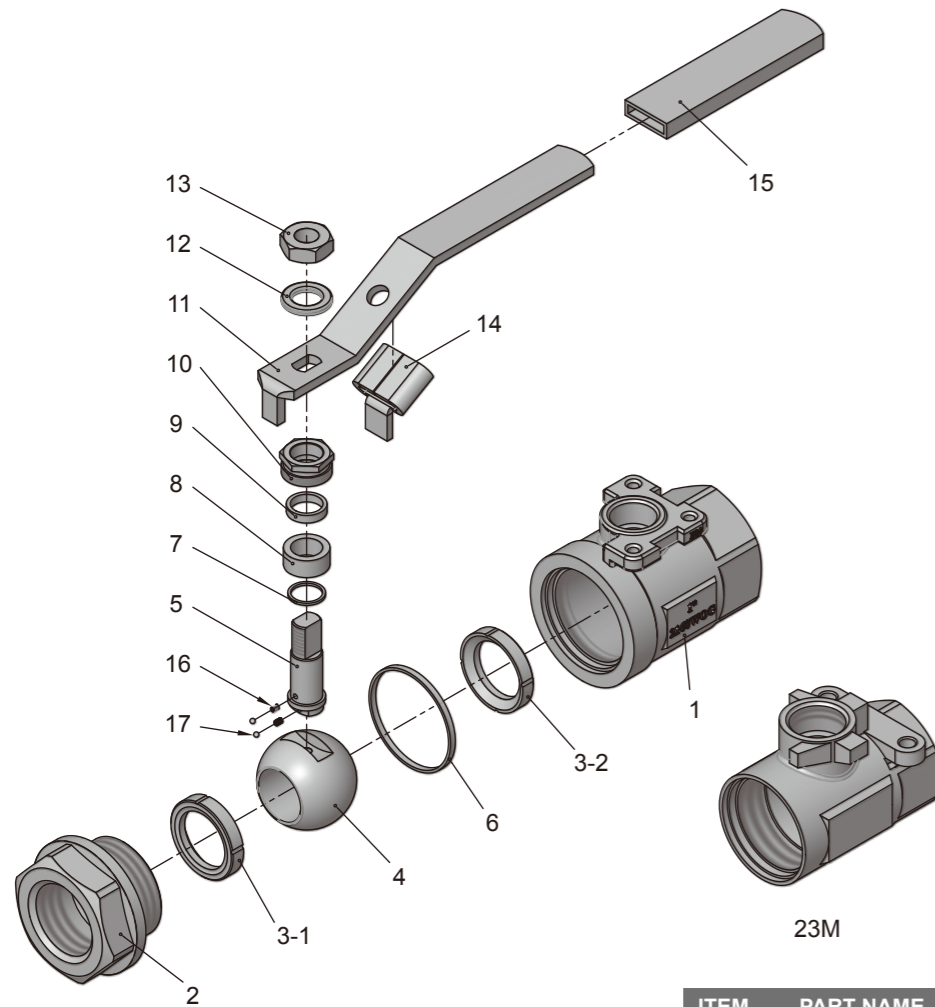
特點 FEATURES

- 以具有競爭力的價格提供卓越的閥門設計。
 - 可安裝驅動器的 ISO 平台架。
 - RPTFE密封消除了對產品污染的擔憂。
 - 防火認證 API 607。可應要求提供。
 - 較低的操作扭力，便於操作並降低執行器成本。
 - 明確的開關位置指示。
 - 防爆軸心。
 - NACE MR0175 可應要求提供。
 - 可使用附鎖裝置。
 - 防靜電裝置。
 - 根據 ISO 9001 認證的質量體系製造。
 - 多種球座材質可供選擇。
- 除了標準的球座材質，球座有以下材質可供選擇。每個球座選項將滿足廣泛的性能，適用於許多應用：
- PTFE + 15% Glass Fiber
 - PTFE + 25% Carbon Fiber
 - Modified PTFE
 - Modified PTFE + 25% Carbon Fiber
 - PTFE + 50% SS
 - PEEK
 - UHMWPE
- * 請參考溫壓圖
- Superior valve design at a competitive price.
 - ISO actuator mounting pad available for mount actuator.
 - RPTFE seal relieves concern over product contamination.
 - Fire test certified to API 607. Available on request.
 - Lower operating torque for ease of operation and reduced actuator cost.
 - Positive position indication.
 - Blowout-proof shaft.
 - NACE MR0175 available on request.
 - Locking device is available.
 - Anti-static Device.
 - Manufactured under ISO 9001 certified quality system.
 - Various seat material are available.
- In addition to standard seat material, following variety is available. Each material option will meet a wide range of performance, suitable for many applications.
- PTFE + 15% Glass Fiber
 - PTFE + 25% Carbon Fiber
 - Modified PTFE
 - Modified PTFE + 25% Carbon Fiber
 - PTFE + 50% SS
 - PEEK
 - UHMWPE
- * Please refer to the Pressure-Temperature rating

23H剖面圖



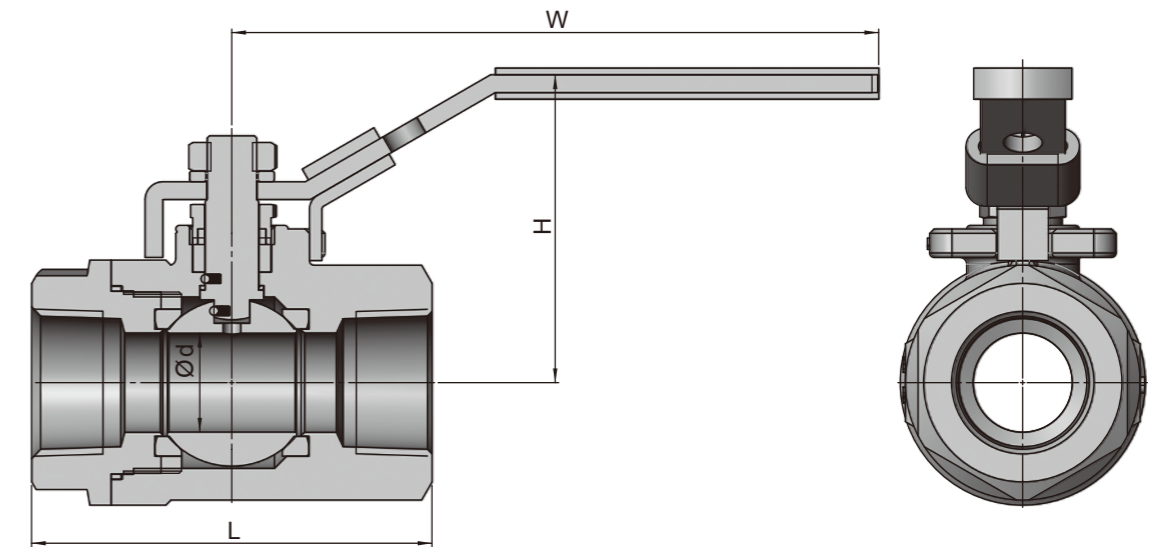
物料表 MATERIAL COMPOSITION



ITEM	PART NAME	STAINLESS STEEL	CARBON STEEL
1	Body	A351-CF8M	A216-WCB
2	End Caps	A351-CF8M	A216-WCB
3	Seat	TFM1600	TFM1600
4	Ball	A351-CF8M	A351-CF8M
5	Stem	SS 316	SS 316
6	Body Seal	TFM1600	TFM1600
7	Thrust Washer	TFM1600	TFM1600
8	Stem Packing	PTFE	PTFE
9	Gland Bush	PTFE	PTFE
10	Packing Gland	SS 304	SS 304
11	Handle	SS 304	SS 304
12	Lever Spring Washer	SS 304	SS 304
13	Lever Nut	SS 304	SS 304
14	Locking Device	SS 304	SS 304
15	Handle Cover	VINYL	VINYL
16	Spring	SS 316	SS 316
17	Anti-Static	SS 316	SS 316

* 我方有權隨時變更材質/設計/規格，以便提供品質優良的產品。
We reserve the right to modify the design / specification without previous notice for better quality.

尺寸圖 DIMENSION LIST



23H (Class 900)

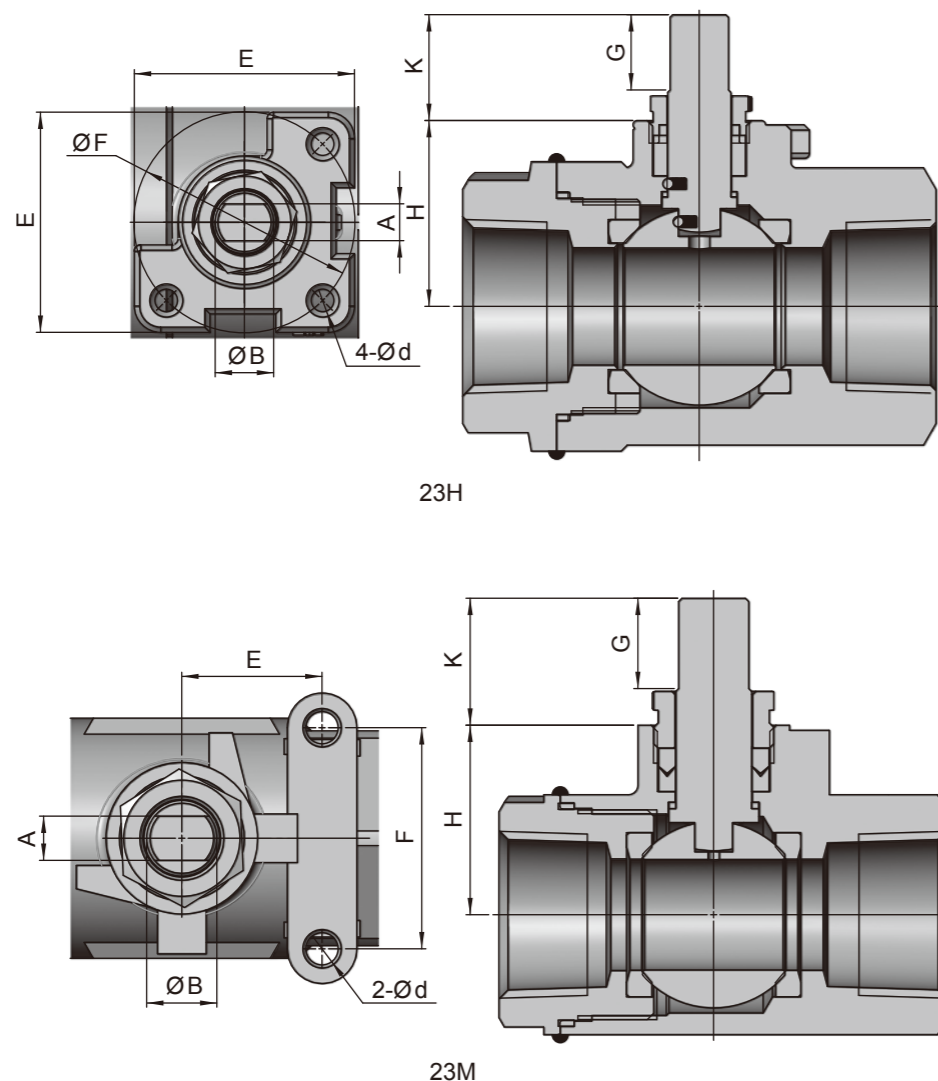
SIZE	d	L	W	H	ISO5211
1/4"	9.5	67.3	106	45	F03
3/8"	9.5	67.3	106	45	F03
1/2"	12.7	67.3	106	49	F03
3/4"	17.5	78.2	145	63.8	F04
1"	22.2	89.9	145	67.4	F04
1-1/4"	25.4	101.9	192	73.7	F05
1-1/2"	32	108.2	192	78.5	F05
2"	38.1	125.5	192	85.8	F05

23M (Class 800)

SIZE	d	L	W	H
1/4"	9.5	52.8	106	45
3/8"	9.5	52.8	106	45
1/2"	12.7	59.5	106	49
3/4"	17.5	71	145	63.8
1"	22.2	82.7	145	67.4
1-1/4"	25.4	91.4	192	73.7
1-1/2"	32	103	192	78.5
2"	38.1	110	192	85.8

* 我方有權隨時變更材質/設計/規格，以便提供品質優良的產品。
We reserve the right to modify the design / specification without previous notice for better quality.

平台架尺寸 DIMENSIONS OF ISO MOUNTING PAD



23H (Class 900)

SIZE	A	B	d	E	F	G	K	H	ISO5211
1/4"	5	7.9	M5	36.9	36	8.5	12	22.8	F03
3/8"	5	7.9	M5	36.9	36	8.5	12	22.8	F03
1/2"	5	7.9	M5	36.9	36	10	15	25.4	F03
3/4"	7	11.1	M5	42	42	14.3	20.1	32.1	F04
1"	7	11.1	M5	42	42	14.3	20.1	35.3	F04
1-1/4"	9	14.2	M6	50	50	16	22.7	42.2	F05
1-1/2"	9	14.2	M6	50	50	16	22.7	47.5	F05
2"	9	14.2	M6	50	50	18	28	51.9	F05

23M (Class 800)

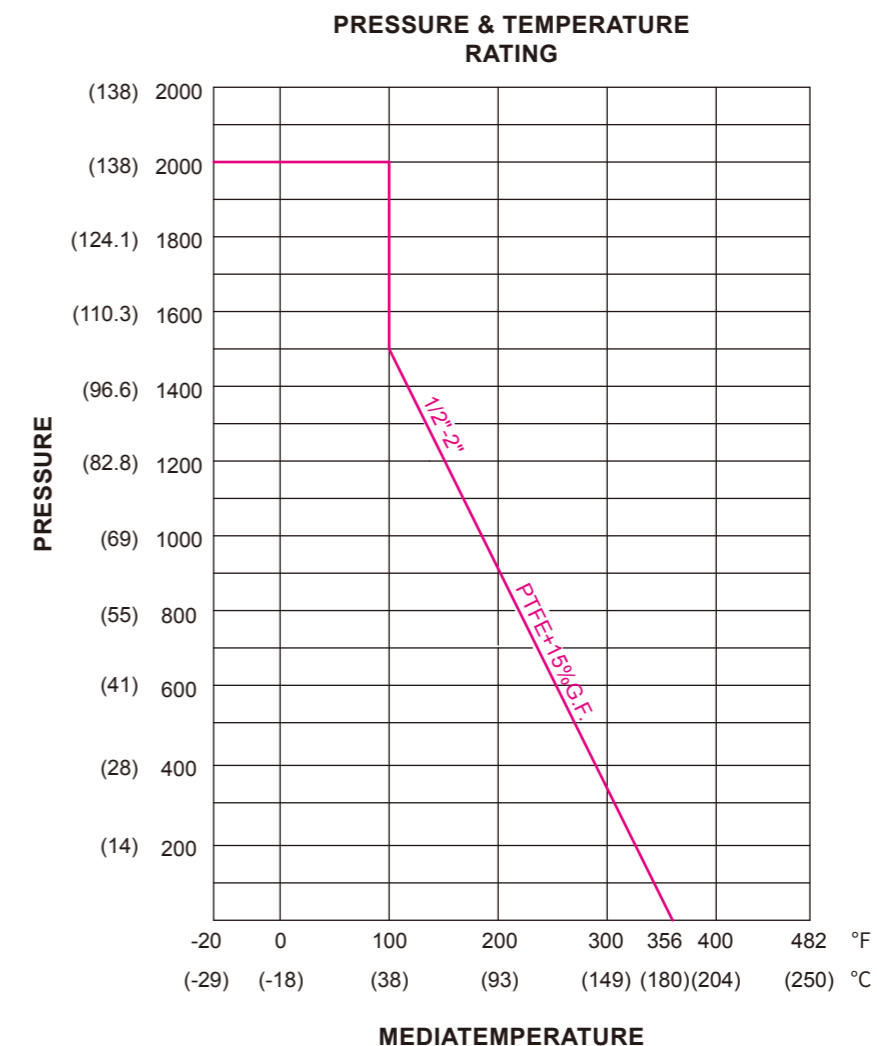
SIZE	A	B	d	E	F	G	K	H
1/4"	5	7.9	10#-24 UNC	12.7	28.5	8.5	13.5	20
3/8"	5	7.9	10#-24 UNC	12.7	28.5	8.5	13.5	20
1/2"	5	7.9	10#-24 UNC	12.7	28.5	10	15	24
3/4"	7	11.1	10#-24 UNC	22	35	14.3	20.1	30
1"	7	11.1	10#-24 UNC	22.2	35	14.3	19.7	34
1-1/4"	9	14.2	1/4"-20 UNC	23.6	38	16	22	40.2
1-1/2"	9	14.2	1/4"-20 UNC	23.6	38	16	22	45
2"	9	14.2	1/4"-20 UNC	23.6	38	18	25.3	51

* 我方有權隨時變更材質/設計/規格，以便提供品質優良的產品。

We reserve the right to modify the design / specification without previous notice for better quality.

溫度壓力曲線圖 P/T CHART

型號 Fig. No. : 23M

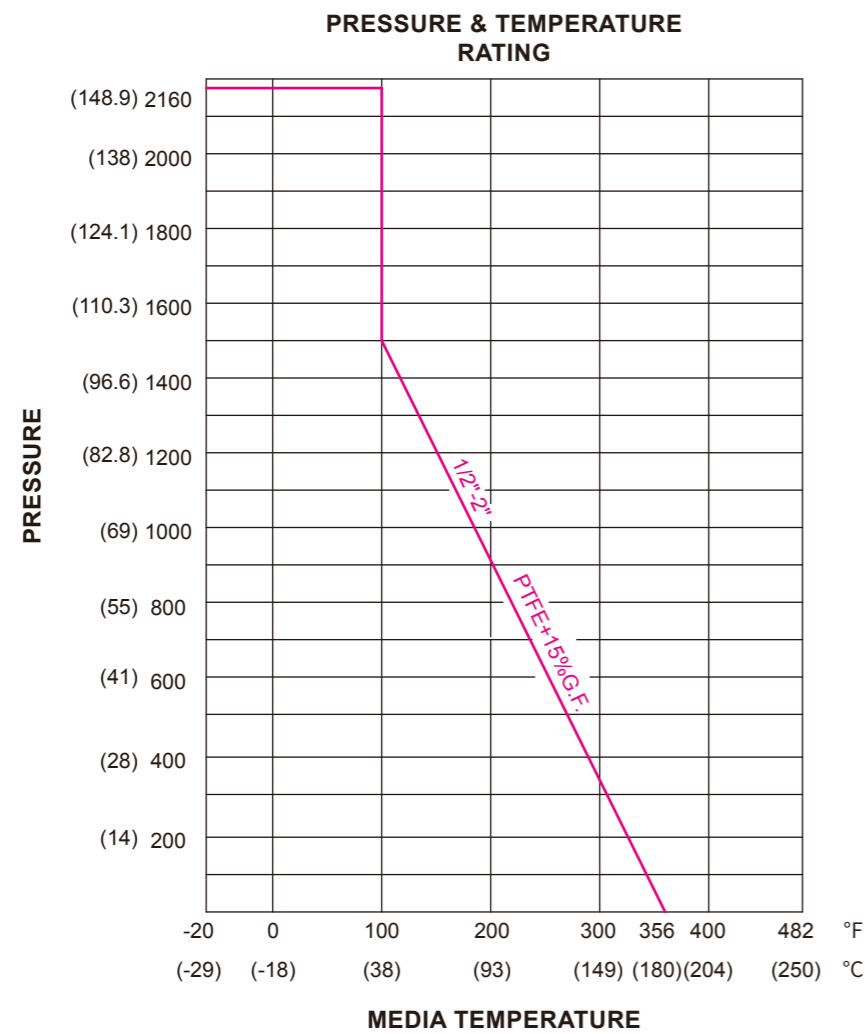


Remark:

1. It is recommended that the appropriate seat material, providing a higher pressure & temperature, is selected, if you feel the standard material is borderline and you prefer a larger safety allowance.
2. For steam service, options available are PEEK, PTFE+50%SS, or Metal seat, depending on the service application.
3. Final selection of seat material is the user's choice, experience & responsibility.
4. Solid Lines-Continuous Temperature
Dotted Lines-Intermittent / Peak Temperature

溫度壓力曲線圖 P/T CHART

型號 Fig. No. : 23H



Remark:

1. It is recommended that the appropriate seat material, providing a higher pressure & temperature, is selected, if you feel the standard material is borderline and you prefer a larger safety allowance.
2. For steam service, options available are PEEK, PTFE+50%SS, or Metal seat, depending on the service application.
3. Final selection of seat material is the user's choice, experience & responsibility.
4. Solid Lines-Continuous Temperature
Dotted Lines-Intermittent / Peak Temperature